



Monika Goślińska (Autor)

# Strategy for spray coating of highly porous and light weighting particles using spouted bed technology



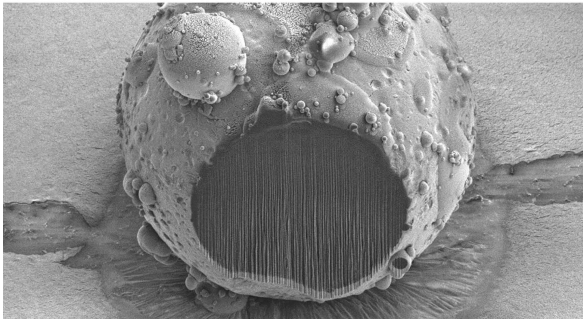
**SPE-Schriftenreihe**

**21**

Herausgegeben von Prof. Dr.-Ing. habil. Dr. h.c. Stefan Heinrich

Monika Goślińska

## Strategy for spray coating of highly porous and light weighting particles using spouted bed technology



Cuvillier Verlag Göttingen  
Internationaler wissenschaftlicher Fachverlag

<https://cuvillier.de/de/shop/publications/8749>

Copyright:

Cuvillier Verlag, Inhaberin Annette Jentsch-Cuvillier, Nonnenstieg 8, 37075 Göttingen, Germany

Telefon: +49 (0)551 54724-0, E-Mail: [info@cuvillier.de](mailto:info@cuvillier.de), Website: <https://cuvillier.de>

# Contents

List of Symbols	XI
<b>1 Introduction</b>	<b>1</b>
1.1 Motivation . . . . .	1
1.2 Objectives and scope of the thesis . . . . .	4
1.3 Outline of the thesis . . . . .	5
<b>2 Theoretical Background</b>	<b>7</b>
2.1 Spouted bed technology . . . . .	7
2.1.1 Process description . . . . .	7
2.1.2 Regime maps . . . . .	9
2.1.3 Minimum spouting velocity . . . . .	11
2.1.4 Classification of particles . . . . .	12
2.1.5 Granulation and particle coating . . . . .	13
2.1.6 Coating on single particle level . . . . .	16
2.2 Aerogels . . . . .	18
2.2.1 Preparation technique . . . . .	19
2.2.2 Applications and challenges . . . . .	24
2.2.3 Coating of aerogels - state of the art . . . . .	26
<b>3 Materials and Methods</b>	<b>33</b>
3.1 Materials . . . . .	33
3.1.1 Shellac . . . . .	33
3.1.2 Beeswax . . . . .	35
3.1.3 Alginate aerogels . . . . .	37
3.2 Characterization of coatings . . . . .	38
3.2.1 Viscosity . . . . .	39
3.2.2 Surface tension . . . . .	39
3.2.3 Droplet size distribution . . . . .	39
3.2.4 Melting point . . . . .	43

---

3.2.5	Glass transition temperature . . . . .	43
3.2.6	Water vapour permeability . . . . .	44
3.2.7	Dynamic vapour sorption . . . . .	45
3.2.8	Minimum film forming temperature . . . . .	46
3.2.9	Contact angle measurement . . . . .	47
3.3	Particle characterization . . . . .	49
3.3.1	Particle size distribution . . . . .	49
3.3.2	Skeletal particle density . . . . .	50
3.3.3	Specific surface area . . . . .	51
3.3.4	Scanning electron microscopy . . . . .	51
3.3.5	Roughness . . . . .	52
3.3.6	Angle of repose . . . . .	52
3.3.7	Coefficient of restitution . . . . .	53
3.3.8	Mechanical properties . . . . .	54
3.4	Evaporation kinetics of single coating droplets . . . . .	54
3.4.1	Acoustic levitator setup . . . . .	55
3.4.2	Evaluation of single droplet drying experiments . . . . .	56
3.4.3	Statistical analysis . . . . .	59
3.5	Coating on single particle level by means of acoustic levitation . . . . .	60
3.5.1	Modification of acoustic levitation setup . . . . .	61
3.6	Coating on multi particle level . . . . .	63
3.6.1	Spouted bed setup . . . . .	63
3.6.2	Process conditions . . . . .	66
3.6.3	Fluidized bed setup . . . . .	67
<b>4</b>	<b>Results</b>	<b>69</b>
4.1	Characterization of untreated aerogels . . . . .	69
4.1.1	Properties of alginate particles . . . . .	69
4.2	Characterization of coatings . . . . .	72
4.2.1	Viscosity . . . . .	72
4.2.2	Surface tension . . . . .	74
4.2.3	Droplet size distribution . . . . .	76
4.2.4	Minimum film forming temperature . . . . .	79
4.2.5	Appearance of the film and roughness . . . . .	82
4.2.6	Dynamic vapour sorption . . . . .	83
4.2.7	Water vapour permeability . . . . .	84

---

---

4.2.8	Contact angle . . . . .	86
4.2.9	Thermal characteristics . . . . .	87
4.2.10	Summary . . . . .	89
4.3	Drying kinetics of single coating droplets . . . . .	90
4.3.1	Evaporation rate coefficient of first drying period . . . . .	90
4.3.2	Drying time of first drying period . . . . .	93
4.3.3	Modelled evaporation rate coefficient . . . . .	95
4.3.4	Morphology of dried droplets . . . . .	97
4.4	Coating on a single particle level using acoustic levitation technique . . . . .	100
4.4.1	Influence of drying temperature . . . . .	101
4.4.2	Influence of solid concentration . . . . .	103
4.4.3	Influence of nozzle air pressure . . . . .	105
4.4.4	Influence of spray rate of coating . . . . .	106
4.4.5	Influence of nozzle cap position . . . . .	108
4.4.6	Influence of residence time in the spray zone . . . . .	109
4.4.7	Influence of coating on the internal particle structure . . . . .	111
4.4.8	Beeswax coating on single particle level . . . . .	113
4.4.9	Overview of recommended process conditions for coating on multiple particle level . . . . .	114
4.5	Coating on a multiple particle level using spouted bed technology . . . . .	116
4.5.1	Process development . . . . .	117
4.5.2	Particle morphology . . . . .	119
4.5.3	Transition area between coating layer and particle core . . . . .	129
4.5.4	Particle size distribution . . . . .	131
4.5.5	Roughness . . . . .	131
4.5.6	Dynamic water sorption . . . . .	133
4.5.7	Coefficient of restitution . . . . .	138
4.5.8	Bulk density . . . . .	139
4.5.9	Angle of repose . . . . .	140
4.5.10	Mechanical stability . . . . .	142
4.5.11	Specific surface area . . . . .	143
4.5.12	Coating of coarse aerogel particles . . . . .	146
4.5.13	Coating of aerogels with beeswax . . . . .	147
<b>5</b>	<b>Conclusion</b>	<b>149</b>

---

<b>6 Appendix</b>	<b>153</b>
6.1 Components of in-house built prismatic spouted bed . . . . .	153
6.2 Components of laboratory fluidized bed GF3 . . . . .	153
6.3 Specification of the nozzle . . . . .	154
6.4 Particle density . . . . .	154
6.5 Supplementary data on viscosity of coatings . . . . .	155
6.6 Supplementary data on shellac coating . . . . .	155
6.7 Drying of single droplets - 3D plots . . . . .	156
6.8 List of student theses . . . . .	157
<b>Bibliography</b>	<b>159</b>