

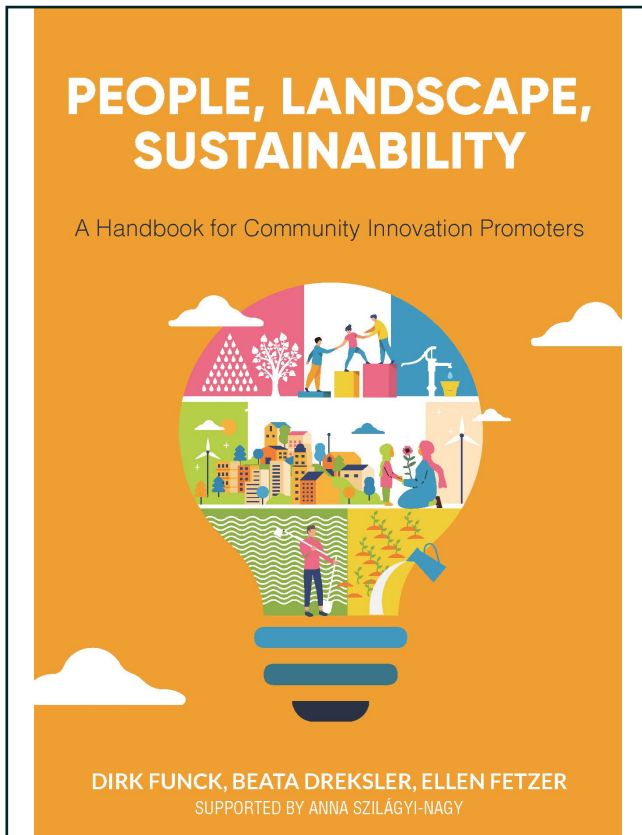


Beata Dreksler (Autor)

Ellen Fetzer (Autor)

Dirk Funck (Autor)

**PEOPLE, LANDSCAPE, SUSTAINABILITY**  
A Handbook for Community Innovation Promoters



<https://cuvillier.de/de/shop/publications/8827>

Copyright:

Cuvillier Verlag, Inhaberin Annette Jentsch-Cuvillier, Nonnenstieg 8, 37075 Göttingen, Germany

Telefon: +49 (0)551 54724-0, E-Mail: [info@cuvillier.de](mailto:info@cuvillier.de), Website: <https://cuvillier.de>

# Table of contents

## **INTRODUCTION** 11

---

## **1 SUSTAINABLE COMMUNITY DEVELOPMENT - A CONCEPTUAL FRAMEWORK** 14

1.1 Sustainability Competencies Are Key to Achieving the Global Sustainability Agenda	14
1.2 Landscape as A Framework for Sustainable and Community-Based Development	17
1.3 Social Innovation and Social Entrepreneurship	19
1.4 Communities and Sustainable Development	21
1.4.1 Importance of The Local and Community Level	21
1.4.2 Success Factors	23
1.4.3 Community Innovation Promotor	27
1.5 Third Mission of Higher Education Institutions	29
1.6 Design Thinking and Business Development	30

---

## **2. DEVELOPING AND TESTING PROTOTYPES (BASED ON DESIGN THINKING APPROACH)** 37

2.1. Empathize and Understand	37
2.1.1 Empathy and Community Development	37
2.1.2 Community Mapping - Basics and Methods	40
Landscape Safari	
Map Of Actors	
Interviews, Empathy Map and Persona	
Community Map	

2.2. Define	64
2.2.1 Be Confused!	64
Wicked Problems	
Comfort Zone	
2.2.2 Methods	70
PESTLE	
DPSIR	
SWOT	
2.3 Ideate	83
2.3.1 Preliminary Remarks	83
2.3.2 Methods	83
Structured Brainstorming	
Brainwriting	
Multiplying Ideas With 6-3-5 Brainwriting	
Forced Analogy	
2.3.3. Theory of Change	88
2.4 Prototype	93
2.4.1 What is a Prototype?	93
2.4.2 How to Build a Prototype?	96
2.5 Field-Testing	100
-----	
<b>3 CONCEPTUALIZE AND PLAN THE BUSINESS</b>	<b>105</b>
3.1 Conceptualize: Design of a Social Business Model Canvas	105
3.2 Twelve Steps to Develop a Social Business Model	110
3.2.1 Vision and Mission Statement	110
3.2.2 Customer and Beneficiaries	112
3.2.3 Value Proposition	119
3.2.4 Products and Services	126
3.2.5 Channels	128
3.2.6 Key Processes	133

3.2.7 Key Resources	137
3.2.8 Key Partners	143
3.2.9 Cost- and Income-Driver	148
3.2.10 Economical Key Performance Indicators	152
3.2.11 Social Impact Measurement	155
3.2.12 Portrait of Social Enterprise	158
3.3 Plan the Business	160

---

## **4 EDUCATION OF COMMUNITY INNOVATION PROMOTERS (CIP) – THE CASE OF AJLOUN, JORDAN**

169

4.1 Social Innovation Lab in Al Oyoum	169
4.2 The Didactical Concept	171
4.3 Outcome and Impact	176

---

## **GLOSSARY**

182

---

## **BIBLIOGRAPHY**

190

---

## **AUTHORS**

201