



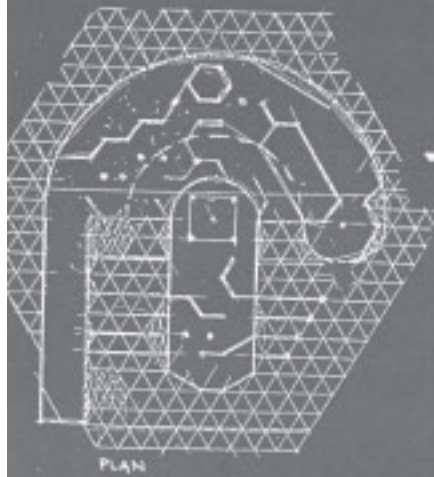
Maria Bostenaru Dan (Autor)
**Spațiul verde redescoperit - Der wiederentdeckte
Grünraum**



<https://cuvillier.de/de/shop/publications/722>

Copyright:
Cuvillier Verlag, Inhaberin Annette Jentsch-Cuvillier, Nonnenstieg 8, 37075 Göttingen,
Germany
Telefon: +49 (0)551 54724-0, E-Mail: info@cuvillier.de, Website: <https://cuvillier.de>

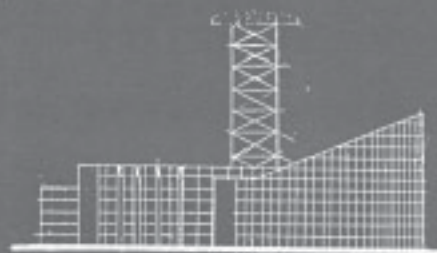
GENEZA UNUI PEISAJ - METAMORFOZA



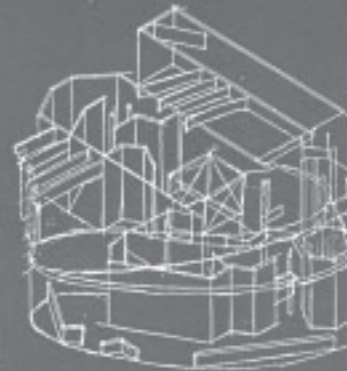
PLAN



SECTIUNE



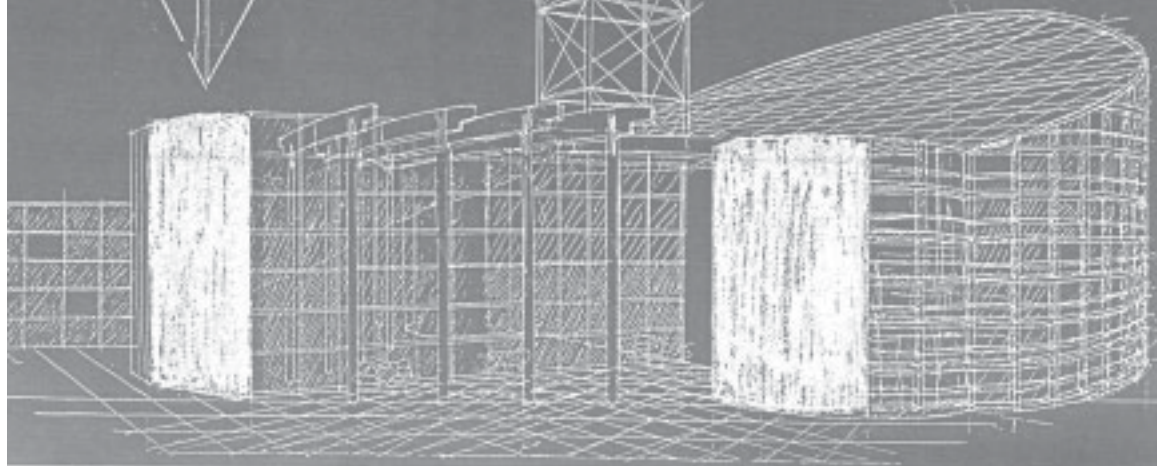
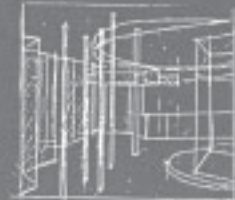
VEZERE

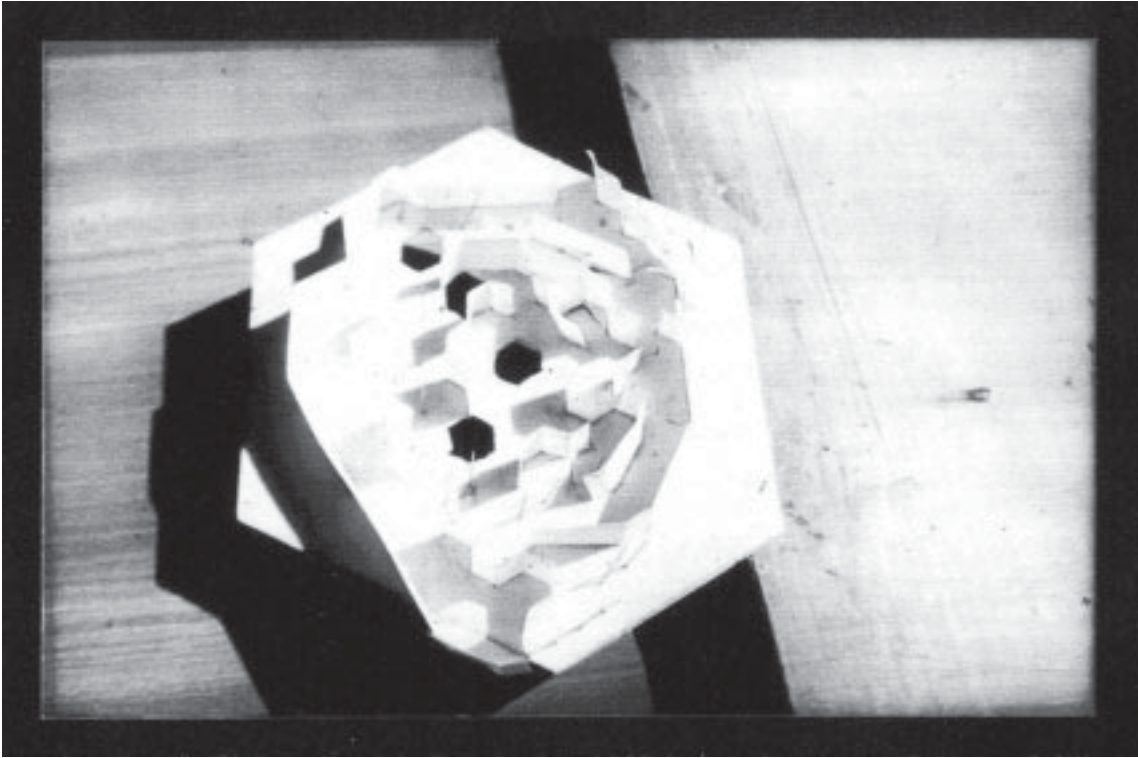


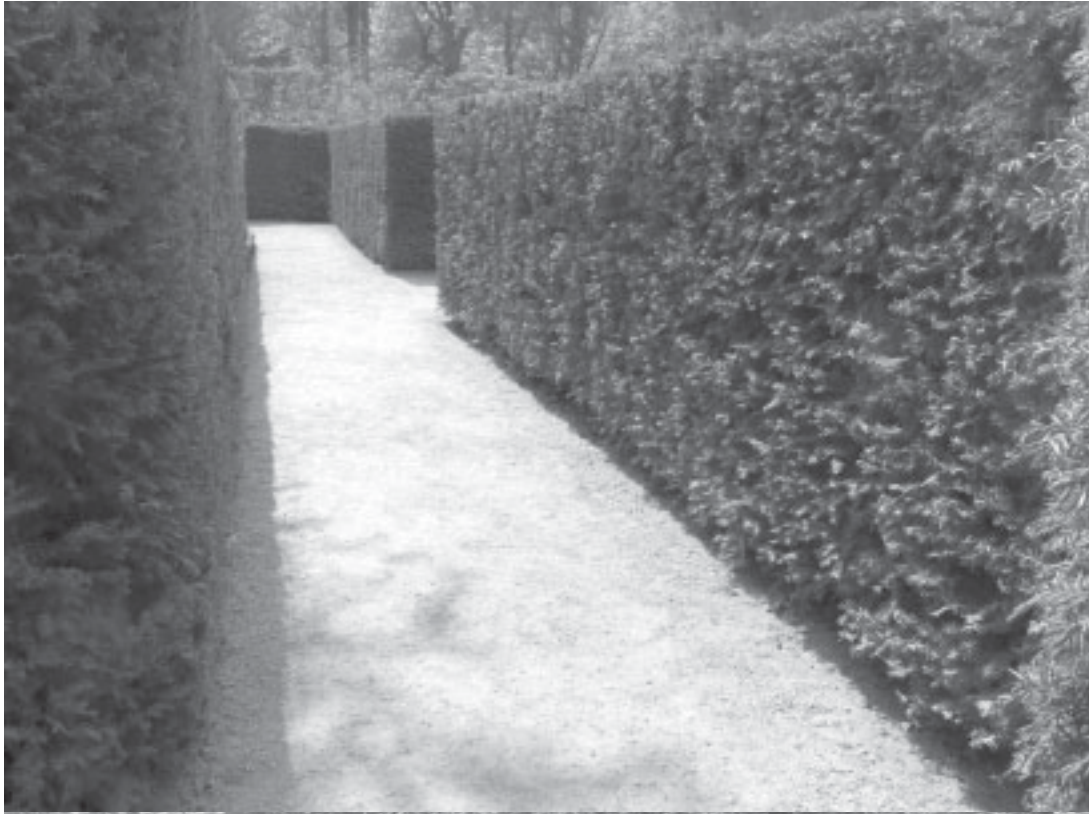
AXONOMETRIE

*DARINILE ORIGINARE SINT TRAGUTE
 CARE MI KRUTA ADOVA EDCALIRE,
 DOUT IN GORITUL CALACCA, CARE POT
 FI IINA INFAPUITE SI FAGUNE VEZIBILE
 IN MATHON.MOUT IMALINE SA O FOTURA
 ANTIETICA SA EDVIRA VEZIBILA SI SA
 DOBZIRNACA REALITATE, SA E FENICENTA,
 CA IMAGINE ORIGINARA, NICE ERANT, SAR
 ERANT TELA CE VECHII FILOSOFE ROMANI
 O IICE *

HELMUTH HEISE







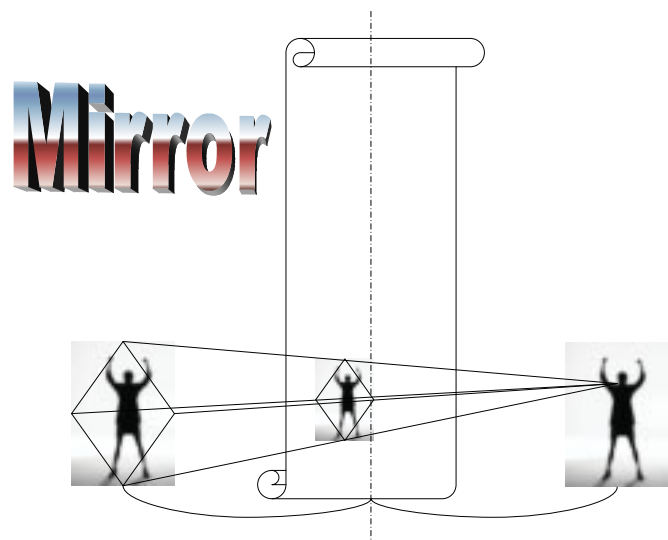
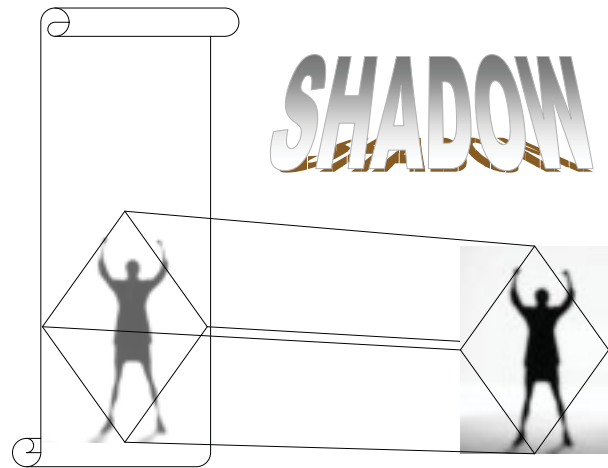
26



Grădina labirint, în parcul Schöbrunn, Viena
Labyrinthgarte, Schönbrunn, Wien



Grădina labirint, în parcul Schönbrunn, Viena
Labyrinthgarten, Schönbrunn, Wien



Proiecții și porți de intrare într-o altă lume – concept
Projekzionen und Eingangstüren in einer anderen Welt-Konzept



Ușa către spațiul redescoperit, seminar de cercetare cu Daniel Libeskind, 2000-2001

Die Tür zum wiederentdeckten Raum, Forschungsseminar bei Daniel Libeskind, 2000-2001



30



Ușa către spațiul redescoperit, seminar de cercetare cu Daniel Libeskind, 2000-2001

Die Tür zum wiederentdeckten Raum, Forschungsseminar bei Daniel Libeskind, 2000-2001