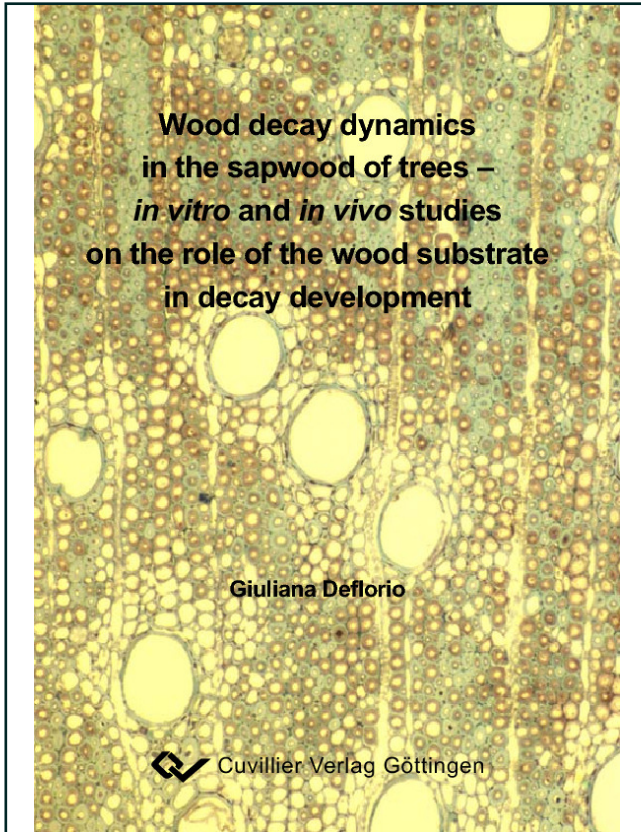




Giuliana Deflorio (Autor)

**Wood decay dynamics in the sapwood of trees - in vitro and in vivo studies on the role of the wood substrate in decay development**



<https://cuvillier.de/de/shop/publications/2130>

Copyright:

Cuvillier Verlag, Inhaberin Annette Jentsch-Cuvillier, Nonnenstieg 8, 37075 Göttingen, Germany

Telefon: +49 (0)551 54724-0, E-Mail: [info@cuvillier.de](mailto:info@cuvillier.de), Website: <https://cuvillier.de>

# CONTENTS

<b>Acknowledgements</b>	vi
<b>Preface</b>	ix

## **1. General introduction**

<b>1.1 The problem of decay for urban and plantation trees</b>	1
<b>1.2 Host-fungal interactions</b>	2
<b>1.3 Wood decay fungi</b>	4
1.3.1 Adaptation of decay fungi to the wood substrate	7
1.3.2 Inoculum potential, decay capacity, and fungal invasiveness	13
<b>1.4 Tree defense mechanisms</b>	15
<b>1.5 Major hypotheses and research questions</b>	18

## **2. *In vitro* decay capacity of wood decay fungi and adaptation to wood**

<b>2.1 Introduction</b>	22
<b>2.2 Material and Methods</b>	
2.2.1 Fungal and wood material	
2.2.1.1 Experiment 1	24
2.2.1.2 Experiment 2	25
2.2.1.3 Experiment 3	26
2.2.1.4 Experiment 4	27
2.2.2 Methods	
2.2.2.1 Identification and cultivation of fungal material	28
2.2.2.2 Preparation of wood samples	28
2.2.2.3 Reisolation of the causal agents	29
2.2.2.4 Detection of fungal colony growth	29
2.2.2.5 Determination of wood weight loss and wood moisture content	29
2.2.2.6 Determination of respiration rates	30
2.2.2.7 Light microscopy (Exp. 4)	31
2.2.2.8 Statistical analysis	31

## **2.3 Results**

### **2.3.1 Experiment 1**

2.3.1.1 Growth of fungal colonies	34
2.3.1.2 Respiration rates	36
2.3.1.3 Wood moisture content and wood weight loss	39

### **2.3.2 Experiment 2**

2.3.2.1 Growth of fungal colonies	43
2.3.2.2 Respiration rates	44
2.3.2.3 Wood moisture content and wood weight loss	47

### **2.3.3 Experiment 3**

2.3.3.1 Respiration rates	49
2.3.3.2 Wood moisture content and wood weight loss	52

### **2.3.4 Experiment 4**

2.3.4.1 Macroscopic and microscopic tree ring detection	68
2.3.4.2 Wood weight loss	73

## **2.4 Discussion**

2.4.1 Experiments 1, 2, and 3	76
2.4.2 Experiment 4	85

## **3. Wood decay dynamics in the sapwood of living trees**

### **3.1 Introduction**

89

### **3.2 Material and Methods**

#### **3.2.1 Fungal and tree material**

3.2.1.1 Experiment 1	92
3.2.1.2 Experiment 2	93

#### **3.2.2 Methods**

3.2.2.1 Identification and cultivation of fungal isolates	94
3.2.2.2 Preparation of the inoculum	94
3.2.2.3 Stem inoculation of the standing trees	95
3.2.2.4 Reisolation of the causal agents	97
3.2.2.5 Morphological wound features before tree felling	97
3.2.2.6 Morphological assessment of dysfunctional wood	98
3.2.2.7 Determination of wood moisture content and weight loss (Exp. 1)	98
3.2.2.8 Determination of total phenols	99
3.2.2.9 Non-invasive detection of decay development (Exp. 1)	100
3.2.2.10 Experimental design and statistical analysis	102

### **3.3 Results**

#### **3.3.1 Experiment 1** (results after 16 and 28 months)

3.3.1.1 Morphological wound features before tree felling	105
3.3.1.2 Non-invasive detection of decay development	107
3.3.1.3 Reisolation of the causal agent	114
3.3.1.4 Spread of dysfunctional wood - axial, radial, tangential direction	116
3.3.1.5 Wood moisture content and wood weight loss	129
3.3.1.6 Total phenols in the reaction zone	134

#### **3.3.2 Experiment 2** (results after 13 months)

3.3.2.1 Morphological wound features before tree felling	140
3.3.2.2 Reisolation of the causal agent	141
3.3.2.3 Spread of dysfunctional wood - axial, radial, tangential direction	142
3.3.2.4 Total phenols in the reaction zone	148

### **3.4 Discussion**

3.4.1 Experiment 1	151
3.4.2 Experiment 2	166

## **4. Behavioral patterns of wood decay fungi after inoculation in living trees**

<b>4.1 Introduction</b>	173
-------------------------	-----

### **4.2 Material and Methods**

4.2.1 Fungal and tree material	
4.2.1.1 Experiment 1	176
4.2.1.2 Experiment 2	176
4.2.2 Methods	
4.2.2.1 Light microscopy	176
4.2.2.2 Stains used for histochemical observations	177

### **4.3 Results**

#### **4.3.1 Experiment 1**

4.3.1.1 The brown-rot fungus <i>Fomitopsis pinicola</i>	178
4.3.1.2 The soft-rot fungus <i>Kretzschmaria deusta</i>	182
4.3.1.3 The white-rot fungus <i>Trametes versicolor</i>	187
4.3.1.4 The white-rot fungi of the <i>Ganoderma</i> species	
4.3.1.4.1 Douglas fir- <i>Ganoderma adspersum</i> combination	193
4.3.1.4.2 Beech- <i>Ganoderma</i> spp. combinations	195
4.3.1.4.3 Oak- <i>Ganoderma</i> spp. combinations	198
4.3.1.4.4 Sycamore- <i>Ganoderma</i> spp. combinations	200

<b>4.3.2 Experiment 2</b>	
4.3.2.1 The white-rot fungus <i>Acanthophysium sparsum</i>	202
4.3.2.2 The unknown white-rot isolate 'D'	204
<b>4.4 Discussion</b>	
4.4.1 Experiment 1	206
4.4.2 Experiment 2	214
<b>5. Defense mechanisms of living trees after inoculation</b>	
<b>with wood decay fungi</b>	
<b>5.1 Introduction</b>	218
<b>5.2 Material and Methods</b>	
5.2.1 Fungal and tree material	
5.2.1.1 Experiment 1	221
5.2.1.2 Experiment 2	221
5.2.2 Methods	
5.2.2.1 Morphology of the reaction zone (RZ) and barrier zone (BZ)	222
5.2.2.2 Light microscopy	222
5.2.2.3 Stains used for histochemical observations	223
<b>5.3 Results</b>	
<b>5.3.1 Experiment 1</b>	
5.3.1.1 Morphology of the reaction zone (RZ) and barrier zone (BZ)	224
5.3.1.2 Histochemistry of the reaction zone (RZ)	227
5.3.1.3 Histochemistry of the barrier zone (BZ)	
5.3.1.3.1 Descriptive features of the BZ in the host species	229
5.3.1.3.2 Decay resistance of the host species	239
5.3.1.3.3 Invasiveness of some host-fungus combinations: BZ penetration	244
<b>5.3.2 Experiment 2</b>	
5.3.2.1 Morphology of the reaction zone (RZ) and barrier zone (BZ)	248
5.3.2.2 Histochemistry of the reaction zone (RZ)	249
5.3.2.3 Histochemistry of the barrier zone (BZ)	
5.3.2.3.1 Descriptive features of the BZ in the host species	250
5.3.2.3.2 Decay resistance of the host species	257
<b>5.4 Discussion</b>	
5.4.1 Experiment 1	261
5.4.2 Experiment 2	272

<b>6. General discussion</b>	
<b>6.1 Introduction</b>	278
<b>6.2 Outline of results</b>	
6.2.1 <i>In vitro</i> decay capacity (chapter 2)	278
6.2.2 <i>In vivo</i> decay severity (chapter 3)	279
6.2.3 Fungal behavior (chapter 4)	281
6.2.4 Host response (chapter 5)	282
<b>6.3 Implications</b>	
6.3.1 Decay capacity	283
6.3.2 Inoculum potential and host susceptibility (or host resistance)	286
6.3.3 Wood decay dynamics in living trees	287
<b>6.4 Future research needs</b>	290
<b>7. Summary</b>	
7.1 Summary	293
7.2 Zusammenfassung	296
<b>8. Cited Literature</b>	301
<b>9. Appendix</b>	
9.1 Appendix A	332
9.2 Appendix B	333
9.3 Appendix C	336