



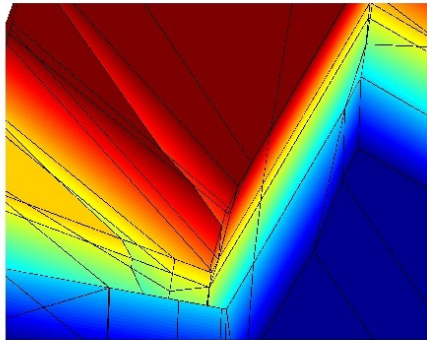
Tobias Geyer (Autor)

Low Complexity Model Predictive Control in Power Electronics and Power Systems

Diss. ETH No. 15953

Tobias Geyer

Low Complexity Model Predictive Control in Power Electronics and Power Systems



Cuvillier Verlag Göttingen

<https://cuvillier.de/de/shop/publications/2588>

Copyright:

Cuvillier Verlag, Inhaberin Annette Jentsch-Cuvillier, Nonnenstieg 8, 37075 Göttingen, Germany
Telefon: +49 (0)551 54724-0, E-Mail: info@cuvillier.de, Website: <https://cuvillier.de>

Contents

Acknowledgements	i
Abstract	iii
Zusammenfassung	v
1 Introduction	1
1.1 Mode Enumeration and Optimal Complexity Reduction	2
1.2 Direct Torque Control	5
1.3 DC-DC Converters	8
1.4 Power Systems	9
I Background	13
2 Background	15
2.1 Polyhedra	15
2.2 Discrete-Time Hybrid Modelling	16
2.2.1 Discrete Hybrid Automata	17
2.2.2 Mixed Logical Dynamical Systems	19
2.2.3 Piecewise Affine Systems	20
2.2.4 HYSDEL	21
2.2.5 Summary	21
2.3 Optimization Problems	22
2.4 Constrained Optimal Control	23
2.4.1 On-Line Computation of Control Input	24
2.4.2 Off-Line Computation of State-Feedback Control Law	25
2.4.3 Receding Horizon Control	28

II	Mode Enumeration and Optimal Complexity Reduction	29
3	Mode Enumeration of Compositional Hybrid Systems	31
3.1	Introduction	31
3.2	Cell Enumeration in Hyperplane Arrangements	33
3.3	Equivalence of DHAs and PWA Systems	35
3.4	Mode Enumeration Algorithm	36
3.4.1	Single DHA	36
3.4.2	Composition of DHAs	37
3.5	Examples and Applications	46
3.5.1	Car Example	46
3.5.2	Paperboy Example	47
3.6	Cuts for Model Predictive Control	50
3.7	Conclusions and Future Research	53
4	Optimal Complexity Reduction of Piecewise Affine Systems	55
4.1	Introduction	55
4.2	Problem Statement and Properties	57
4.2.1	Target Systems	57
4.2.2	Problem Statement	58
4.2.3	Convexity of Unions of Polyhedra	60
4.2.4	Connectivity of Polyhedra	61
4.3	Disjoint Optimal Complexity Reduction	61
4.4	Non-Disjoint Optimal Complexity Reduction	65
4.5	Local and Global Optimality	69
4.5.1	Derivation of Global Hyperplane Arrangement	69
4.5.2	Optimality of Algorithms	72
4.6	Extensions	73
4.6.1	Simplified Hyperplane Arrangement	74
4.6.2	Divide and Conquer	75
4.7	Examples	77
4.7.1	Paperboy Problem	77
4.7.2	Constrained Infinite Time Optimal Control Law	78
4.7.3	Optimal Direct Torque Control Law	80
4.8	Conclusions and Future Research	82

III Direct Torque Control	85
5 Problem Description	87
5.1 Introduction	87
5.2 The dq0 Reference Frame	89
5.3 Nonlinear Continuous-Time Modelling	90
5.3.1 Two-Level Inverter	90
5.3.2 Three-Level Inverter	90
5.3.3 Induction Motor	94
5.4 Control Problem	96
5.5 Classic DTC	97
5.6 Review of Academic State of the Art	98
5.7 Summary of Research Contributions	100
6 Discrete-Time Modelling of DTC Drives	103
6.1 Physical Properties of DTC Drives	103
6.2 Nonlinear Model of DTC Drive with Three-Level Inverter	105
6.3 Low Complexity Modelling	107
6.3.1 Stator Flux Dynamics	107
6.3.2 Three-Level Inverter	112
6.4 PWA Approximation of Nonlinearities	113
6.4.1 Bounds on State Space	113
6.4.2 Stator Flux Dynamics	115
6.4.3 Three-Level Inverter	116
6.5 MLD Model	116
6.5.1 DTC Drive with Two-Level Inverter	117
6.5.2 DTC Drive with Three-Level Inverter	117
6.6 PWA Model	118
6.6.1 DTC Drive with Two-Level Inverter	118
7 Model Predictive Direct Torque Control	121
7.1 Introduction	121
7.2 MPC based on Priority Levels	123
7.2.1 Priority Levels	124
7.2.2 Objective Function	125
7.2.3 On-Line Computation of Control Input	126
7.2.4 Off-Line Computation of State-Feedback Control Law	127
7.2.5 Performance Evaluation	128
7.3 MPC based on Feasibility and Move Blocking	135

7.3.1	On-Line Computation of Control Input	136
7.3.2	Off-Line Computation of State-Feedback Control Law	137
7.3.3	Performance Evaluation	144
7.3.4	Extensions	146
7.4	MPC based on Extrapolation	146
7.4.1	Horizon $N > 1$	147
7.4.2	Horizon $N = 1$	154
7.4.3	Subfunctions of Pseudo Codes	158
7.4.4	Performance Evaluation	161
7.5	Infeasibilities	165
7.6	Case Studies	169
7.7	Conclusions and Future Research	170

IV DC-DC Converters 175

8 Switch-Mode DC-DC Converters 177

8.1	Introduction	177
8.1.1	Switch-Mode DC-DC Conversion	177
8.1.2	Review of the State of the Art	178
8.1.3	Outlook	182
8.2	Modelling the Synchronous Converter	182
8.2.1	Continuous-Time Model	182
8.2.2	ν -Resolution Discrete-Time Hybrid Model	186
8.2.3	ν -Resolution Model in MLD Form	189
8.2.4	ν -Resolution Model in PWA Form	189
8.3	Constrained Optimal Control	190
8.3.1	Objective Function	191
8.3.2	On-Line Computation of Control Input	192
8.3.3	Off-Line Computation of State-Feedback Control Law	192
8.3.4	Load Variations	194
8.4	Analysis	196
8.5	Simulation Results	198
8.5.1	Nominal Start-Up	199
8.5.2	Step Change in Input Voltage	201
8.5.3	Step Change in Output Resistance	203
8.6	Conclusions and Future Research	207

V	Power Systems	211
9	Emergency Voltage Control in Power Systems	213
9.1	Introduction	213
9.1.1	Voltage Stability in Power Systems	213
9.1.2	Review of Emergency Voltage Control	214
9.1.3	Outlook	218
9.1.4	Notation	219
9.2	Nonlinear Model	219
9.2.1	Overview	220
9.2.2	Component Models	221
9.2.3	Fault Scenario	227
9.2.4	Characteristics and Summary	228
9.2.5	Parameters	228
9.3	Hybrid Modelling	230
9.3.1	Decomposition	230
9.3.2	MLD Model	231
9.4	Constrained Optimal Control	232
9.4.1	Control Objectives	232
9.4.2	Cascaded Controller Scheme	233
9.4.3	Objective Function	233
9.4.4	On-Line Computation of Control Input	235
9.5	Simulation Results	237
9.6	Conclusions and Future Research	241
VI	Appendix	243
A	HYSDEL Code	245
A.1	Paperboy Example	245
A.2	DTC Drive with Two-Level Inverter	247
A.3	DTC Drive with Three-Level Inverter	252
A.4	Synchronous Step-Down DC-DC Converter	256
A.5	Power System	259
B	Nomenclature	265
C	Curriculum Vitae	275
	Bibliography	277

